



# Stoneleigh-Burnham School

574 Bernardston Road, Greenfield, MA 01301



## Head of School Search July 2023

Stoneleigh-Burnham School is a boarding and day school for girls in Grades 7 - 12 and Postgraduate (PG).

### Mission

Stoneleigh-Burnham School is an academic community that fosters an international perspective. We inspire girls to pursue meaningful lives based on honor, respect, and intellectual curiosity. Each student is challenged to discover her best self and graduate with confidence to think independently and act ethically, secure in the knowledge that her voice will be heard.

### Community, Equity & Justice Vision Statement

Stoneleigh-Burnham School strives to inspire our students to pursue meaningful lives, and we celebrate our students and our community in all that we do. As a school, we endeavor to be an anti-bias, anti-racist, and culturally responsive educational environment. We value lived experiences, diversity, and wisdom in all forms. Our collective goal is to help every member of our community feel seen, heard, supported, and empowered to thrive.

**As a community we make a commitment to each other to speak and act with humanity, integrity, justice, and compassion toward a shared goal of diversity, equity, and inclusion.** These principles serve as expressions that honor diverse perspectives and experiences not simply as enrichment, but as an essential aspect of a quality education, and as our duty to each other.



## Profile of an SBS Student

### Multi-Dimensional Learner:

- finds joy and power in learning
- engaged in and out of class and demonstrates comprehension of subject matter
- curious, questioning, and intrigued about multiple subject areas
- takes risks knowing that they are in a supportive and safe space to push their own limits
- fully engages with faculty and students in both one-on-one, group, and class settings and proactively seeks help and guidance

### Aspirational Leader:

- seeks opportunities to raise their hands, present an idea, or try something new
- is courageous as defined by them
- is finding their voice, looking for ways to advocate while learning from their peers
- practices physical, emotional, and mental self care and proactively seeks help when needed

### Committed Community Member:

- creates space for others, listens empathetically, and thinks deeply about fairness and equity
- embodies the SBS Community Equity and Justice Vision Statement, fulfilling the expectation that all students are valued, supported, and empowered to be their best selves
- actively listens to different points of view and seeks opinions that are not like theirs
- participates in school activities, both formal and informal, and helps others who might need assistance in identifying their place of belonging at SBS
- seeks to make the world a better place for all







## Academics

### Middle School (Grades 7 & 8)

The Middle School program was founded, and continues to be based, on:

- The School's mission statement and the focus on the international community, respect, authentic best self, and voice
- The research-based principles of successful middle schools – culture, curriculum, and leadership – according to the Association of Middle Level Education
- The core elements of self esteem in girls according to Dr. JoAnn Deak: connectedness, competence, confidence

### Upper School (Grades 9-12 & Postgraduate)

Stoneleigh-Burnham is small by design because we know that our students thrive where they feel genuinely heard. Our intentionally small classes provide each student with the support they need to take risks in their learning. Our students repeatedly remark on the palpable sense of community they find here and that begins with our faculty. Our faculty are dedicated to their students and to our school's mission and values. Most have advanced degrees and all actively pursue professional development in their disciplines. More than half of faculty members live on campus and serve as houseparents and coaches. This translates to an academic environment where students are truly known and are provided with the skilled instruction and encouragement to become their best selves.

### International Baccalaureate

Stoneleigh-Burnham was the first girls' boarding school in New England to offer the International Baccalaureate (IB) Diploma Programme.

The International Baccalaureate (IB) curriculum encourages students to think and to draw connections across disciplines of study. The IB curriculum is like no other in preparing students to succeed in our globalized and interconnected 21st century society. IB students are critical thinkers, and they approach learning with a sense of international-mindedness. Designed in 1968, the IB has gained wide recognition from the world's leading universities.

### Discovery Seminar

Discovery Seminar is a weekly workshop for each grade level, covering topics like health and wellness, social-emotional learning, DEI, technology use, and life skills. Juniors and seniors also work with the College Counselor on college selections and applications.

## The Academic Center

The Academic Center at SBS supports students in developing the skills and strategies necessary to succeed. Students learn how to advocate for themselves and their unique learning styles, secure in the knowledge that their voice will be heard.

To receive support through the Academic Center, students enroll in Academic Skills (a non-credit-bearing course) and meet with the Director of the Academic Center or other Skills teacher regularly each week. Designed to ensure that each student receives personalized support for their individual learning profile, students enrolled in Academic Skills develop their self-esteem, self-awareness, and emotional intelligence. Academic Skills is a fee-based program, supplementing the academic experience at SBS.



## College Counseling

Stoneleigh-Burnham School prepares our students to identify and apply to the colleges that best meet their goals and interests. Beginning in the 11th grade, our students attend college application seminars and meet regularly with our Director of College Counseling, and enjoy a highly individualized approach to their college application process. We also invite college admission representatives to campus each fall to meet with our students.

## College Acceptances for the Class of 2022

Acadia University  
Bennington College  
\*Bentley University  
Barry University  
Bishop's University  
\*Boston University  
\*Brandeis University  
Bridgewater State University  
Cal State Los Angeles  
Cal State Monterey Bay  
Case Western University  
\*Clark University  
Clarkson University  
\*Columbia University  
\*Connecticut College  
\*Cornell University  
Curry College  
Dalhousie University  
Davidson College  
DePaul University  
Drew University  
Drexel University  
\*Emerson College  
Endicott College

Fordham University  
Hobart & William Smith College  
Ithaca College  
\*Lehigh University  
Loyola Marymount University  
\*Lynn University  
Marymount Manhattan College  
Michigan State University  
\*Mount Holyoke College  
Muhlenberg College  
Northeastern University  
Old Dominion University  
Parsons  
Penn State University  
Pratt Institute  
Purdue University  
Rensselaer Polytechnic Institute  
\*Rhode Island School of Design  
Rhodes College  
\*Rochester Institute of

Technology  
Rollins College  
Salem State University  
San Diego State University  
Savannah College of Art & Design  
Seton Hall University  
\*Simmons University  
\*Skidmore College  
Springfield College  
St Lawrence University  
St. Michael's College  
\*Stanford University  
Stetson University  
SUNY Buffalo  
SUNY Fredonia  
Susquehanna University  
Syracuse University  
The Ohio State University  
UC Davis  
UC Irvine  
\*UMass Amherst  
UMass Boston  
Union College

University of Illinois, Urbana-Champaign  
University of Maine, Orono  
\*University of New England  
University of North Carolina, Chapel Hill  
University of Redlands  
University of Rhode Island  
University of Richmond  
\*University of Southern Maine  
\*University of the Pacific  
University of Washington  
Wake Forest University  
Willamette University  
Worcester Polytechnic Institute

*\* Student has committed to the school.*



## Signature Programs

### Visual Arts and Performing Arts

Studying visual and performing arts is an integrated academic and co-curricular learning experience where students learn both the concepts and skills that are common to multiple arts disciplines.

In both Performing and Visual Arts, students engage their creative sensibilities, in tandem and in concert with their academic lives. Stoneleigh-Burnham students take at least two trimesters of arts each year. Offerings include Rock Band, Big Band, Chamber, Octet, Middle and Upper School Chorus, Dance Performance Project, Dance Repertory, and co-curricular dance, Weaving, Ceramics, Drawing and Painting, Digital Animation, and more.

### Athletics

Athletics at Stoneleigh-Burnham are an essential aspect of student life.

We believe that athletics is a positive developmental medium that enriches the educational and personal experiences of the student body as healthy athletes and teammates. Through athletics, students expand their own expectations of their abilities, develop leadership skills that are transferable beyond the athletic arenas, and learn how to be an important part of a larger team. As students graduate from SBS, we want to instill in them the idea that a healthy mind is enhanced by a healthy body.

The athletics department offers both interscholastic and recreational opportunities throughout the school year as well as our esteemed equestrian program and a dynamic dance program.

### Equestrian

Our Equestrian Center is located on campus at Stoneleigh-Burnham School. We offer a variety of programs for Stoneleigh-Burnham students, the British Horse Society (BHS) professional course of study, and summer programs. We also host indoor and outdoor competitions throughout the year at our British Horse Society-approved Livery Yard, Riding School, and Facility.

Stoneleigh-Burnham is the only secondary school in the U.S. to offer British Horse Society Certification. Our riders join a long heritage of respected equestrians and benefit from an engaged alumnae base that is as passionate about horses as they are about our school.

Every rider, from beginner to advanced, receives personalized instruction that reflects her interests, goals, and abilities. Licensed coaches provide instruction tailored to all levels with training in equitation, hunters, jumpers, eventing, dressage, and equine studies.





## Debate & Public Speaking

**Learning to speak with confidence and clarity lies at the heart of the Stoneleigh-Burnham experience.**

Through our world-class Debate & Public Speaking Society, Housemeetings, student government organization, and our Voice 10 program, our students have unlimited opportunities to explore their opinions, develop their arguments, engage their voices, and practice self-advocacy.

The Upper School curriculum incorporates presentation and public speaking skills, and each course offers numerous opportunities for students to become comfortable presenting complex information in front of an audience.



## VOICE 10

Launched this year, Voice 10 is a one year program for 10th grade girls.

The Stoneleigh-Burnham Voice and Empowerment Certificate Program is a deep dive into the practice of discovering a student's authentic voice and training them to deliver their unique point of view to the world. Over the course of one year, our students become skilled advocates for their own opinion, knowledge, and values.

## Diversity, Equity & Inclusion

The School has a DEI department with a full-time director. The DEI department is integral to the School and offers community-wide training and programming throughout the year. Staff regularly receive DEI training during professional development days. At SBS, we believe that it is our duty to improve our school and ourselves in order to create a space in which our students, faculty, staff, and families feel safe and valued. We commit to this duty by examining how our community consciously or unconsciously creates spaces for belonging and affirmation by centering the principles of humanity, integrity, justice, and compassion.



## Governance

The Stoneleigh-Burnham School Board of Trustees is a dedicated group of alumnae, parents, and friends of the School. The Board takes seriously its role as the governing body of Stoneleigh-Burnham School. Nurturing the mission is the Board's most hallowed trust, and they must guarantee that all decisions consistently align with this work. The members of the Board are not strangers to the community at Stoneleigh-Burnham School. Whenever they are on campus, they join the community at Housemeeting, they dine with students and faculty, and they attend performances and athletic competitions. The Board of Trustees meets quarterly and has 10 working committees. Their efforts are informed by the Alumnae Board, Head of School, and a dedicated team of school administrators.



## Summer Programs

### Bonnie Castle Riding Camp

*A program for girls ages 8-16 at the intermediate and advanced skill levels*

BCRC is the premier riding camp in the country. For over thirty years, BCRC has offered instruction in Hunters, Jumpers, Equitation, Dressage, Combined Training, and Equine Studies. At the start of the session, the rider's ability will determine the rider's instructional needs, and place them in an appropriate group. The rider will also be paired with a school horse suited to their size and ability. Riders who prefer learning on their own horse may board it at SBS during camp.



### Horsemanship Camp

*A program for girls & boys ages 9-12 at the beginner skill level*

Our experienced and knowledgeable riding instructors will offer an introduction to horsemanship and riding. The goal of this program is to allow campers the opportunity to learn practical horsemanship skills including grooming, handling, tacking, feeding and beginner rider skills in a safe, fun environment. Stoneleigh-Burnham's Horsemanship Camp will follow the British Horse Society Junior Challenge Awards program.



Animation Camp

### Animation Camp

*A camp for girls & boys ages 11-16 interested in animation*

The camp focuses on 2D, Hand-drawn animation, digitally and on paper. It covers the basics of what animation is and a variety of techniques for creating it. Over the course of a week, campers work on a number of animation exercises as well as a \*short\* cumulative project. In addition to practicing the fundamentals, there is time dedicated to experimentation and exploring other forms of animation.

### Performing Arts Camp

*A camp for girls & boys ages 10-16 interested in the performing arts*

Students will spend time learning and rehearsing a fun program of choral music, musical theater, and dance. Throughout the week, students will have the opportunity to learn about vocal technique and vocal health, work on acting and emoting through a variety of acting games, and focus on dancing for musical theater numbers. They will also practice musicianship and dance technique skills, such as ear training, sight singing, ensemble improvisation, and expressive movement. Campers will work to improve upon skills that are important in both solo and ensemble performance. At the end of the week, students will share their learnings in an informal performance for their family and friends.



Summer at  
Stoneleigh-Burnham:  
Performing Arts Camp





## SBS at a Glance

- Founded in 1869
- Student centered Middle School founded in 2004
- Students from 12 States and 12 Countries
- Student/Teacher ratio 6:1
- Average class size: 10
- Horses on campus: 55
- Boarding tuition is 10% less than national average
- Day tuition is 17% less than national average
- Varsity sports: 7
- International Baccalaureate School
- Gender-inclusive girls school
- Only secondary school in the US to offer the British Horse Society Career Pathways

## Tuition

Enrolling a talented and diverse student body – bright students with a variety of experiences and backgrounds – is central to our mission, and SBS is committed to making our education affordable to students from a wide economic range. By implementing a commitment to independent school affordability, Stoneleigh-Burnham School is not only enriching the educational experience for all, it is also on the leading edge of an important trend in independent school education.

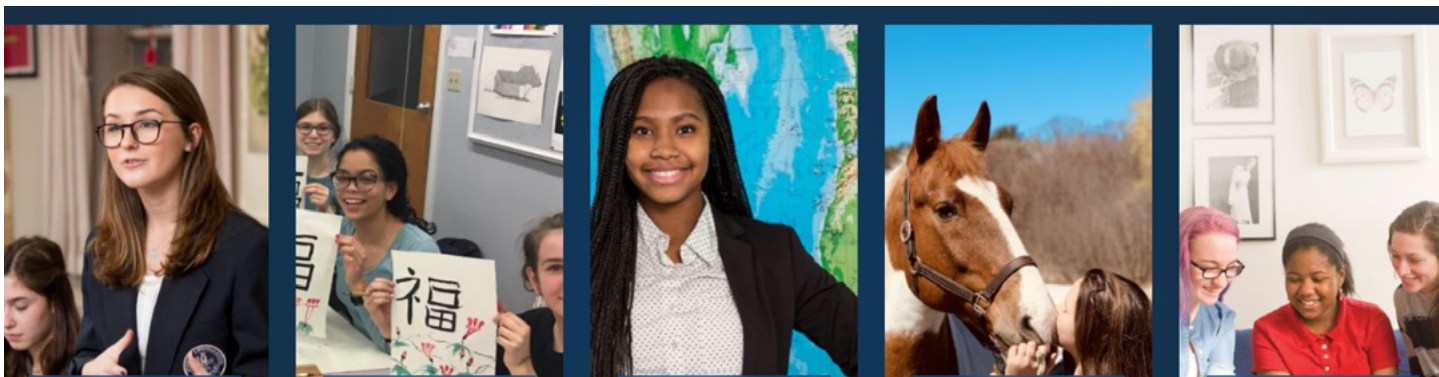
### 2022-2023 Tuition

7-Day Boarding (Grades 7-12 & Postgraduate)	\$53,550
5-Day Boarding (Grades 7-12 & Postgraduate)	\$47,150
Day Students (Grades 9-12 & Postgraduate)	\$23,300
Day Students (Grades 7-8)	\$19,150

*Stoneleigh-Burnham School offers financial aid to enroll competitive students who increase the diversity of our student body, who are appropriate for our mission and program, and who could not otherwise afford to attend.*







## Leadership Profile

Stoneleigh-Burnham School, serving 127 girls in a boarding and day environment, presents a unique leadership opportunity. A forward-looking girls' school with a deep and rich history, diverse student body, dedicated faculty and strong community, Stoneleigh-Burnham prepares students to move confidently and successfully into the world. The school community has the key elements of a strong independent school serving the wants and needs of today's students. The school's challenges are not unlike those facing most independent schools, and the next leader will ideally bring a strong set of experience, skills, and personal qualities.

The next Head of School will be a leader who possesses:

- A clear understanding and appreciation of the benefits of a 7-12 environment designed specifically for girls
- A well-developed leadership style that promotes teamwork and collaborative decision-making while being firm and decisive when need be
- The ability to work with the faculty to provide maximum opportunities for students within the financial capacity of the school
- A clear understanding of the value of a school head actively working in support of the admission and enrollment of students
- A track record of recruiting and retaining capable, dedicated faculty, who are committed to girls' education.
- A deep level of cultural competence that celebrates the school's diversity and promotes a sense of belonging for all students and adults
- Communication skills that not only ensure smooth operations, but also promote the school and its mission in the larger community
- A clear understanding of best practices in establishing a working partnership with the Board and together crafting a vision and revising the strategic plan that will ensure a clear value proposition, solid enrollment, and effective fundraising leading to enhanced financial sustainability
- A clear understanding of the school's financial model and respective challenges
- An inspirational and visionary educational entrepreneur with a track record of developing and championing innovative programs that extend the learning experience within and beyond the boundaries of the campus
- A systems thinker skilled at asking thoughtful questions leading to a solid approach to curriculum development, instruction, assessment and methodology in meeting the needs of a variety of learners
- A love of students that keeps them at the center of the equation and is obvious in daily interactions
- Character traits that include: integrity, self-awareness, warmth and (of course), a sense of humor



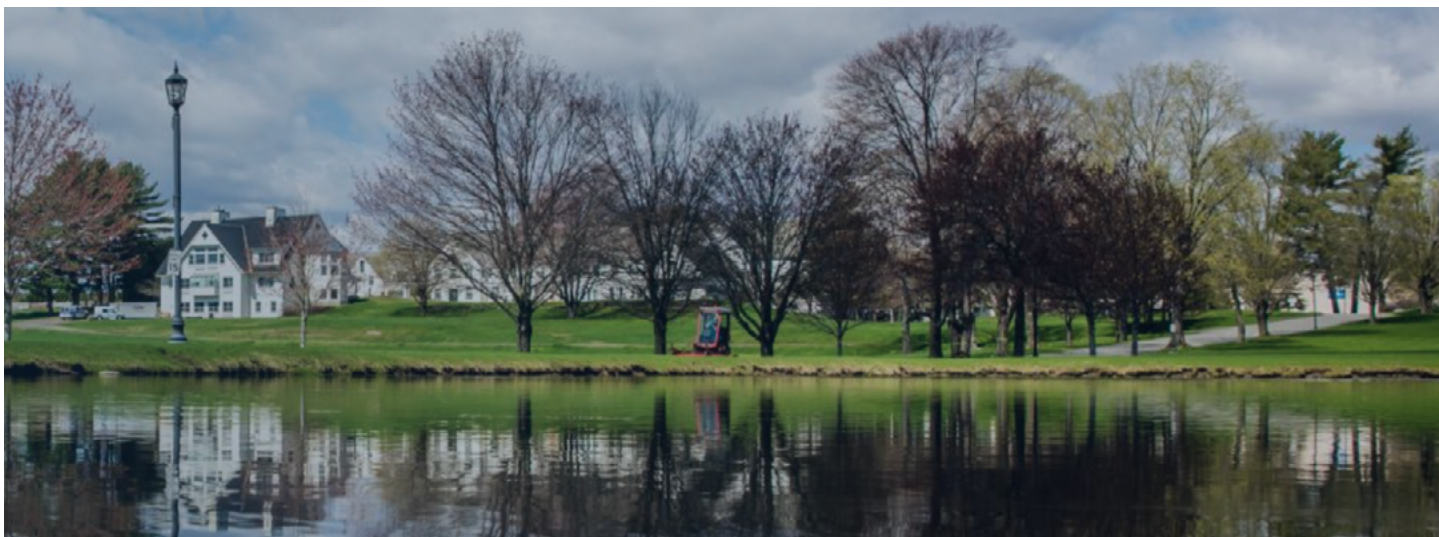
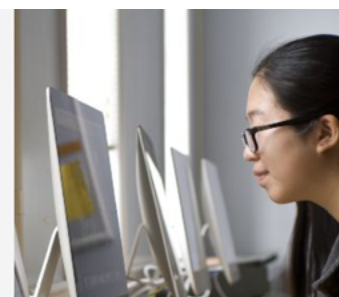
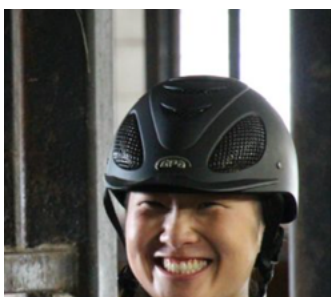
## Application Process

Interested candidates should submit the following documents in a single merged pdf to Mary Seppala:

- EC Candidate Summary (request from Mary Seppala)
- Letter of interest to Stoneleigh-Burnham School Search Committee
- Current resume
- Statement of leadership philosophy
- List of five references with e-mail addresses and telephone contact

### Contact Information:

Mary Seppala  
Partner, Educators Collaborative  
[maryseppala@gmail.com](mailto:maryseppala@gmail.com)  
T. 610 772 7625



# Stoneleigh-Burnham School

574 Bernardston Road, Greenfield, MA 01301

[www.sbschool.org](http://www.sbschool.org)